



Navajo Housing Authority
Procurement Department
P.O. Box 4980, Window Rock, AZ 86515

ADDENDUM NUMBER TWO (2)
Issued: November 27, 2018

Project Name: IFB #412 Modernization of Residential Units AZ12-301 Chilchinbeto, AZ

To All Interested Bidders:

This addendum forms a part of the contract Documents and modifies the Original Bidding Documents and any Subsequent addenda. Acknowledge Receipt of this addendum in the space provided on the bid form, failure to do so is subject to bidder disqualification by the NHA.

- I. **This addendum consists of: Section I, General Information has been revised to extend the bid due date and time; and modification to the Supplemental Information pertaining to the Electrical Scope.**

5. Estimated Schedule of Activities:

Activities:

Due Dates:

d) **Invitation for Bid Due:**

December 6, 2018 @ 3:00PM MST

e) **Execution of Contract/NTP:**

January 28, 2018

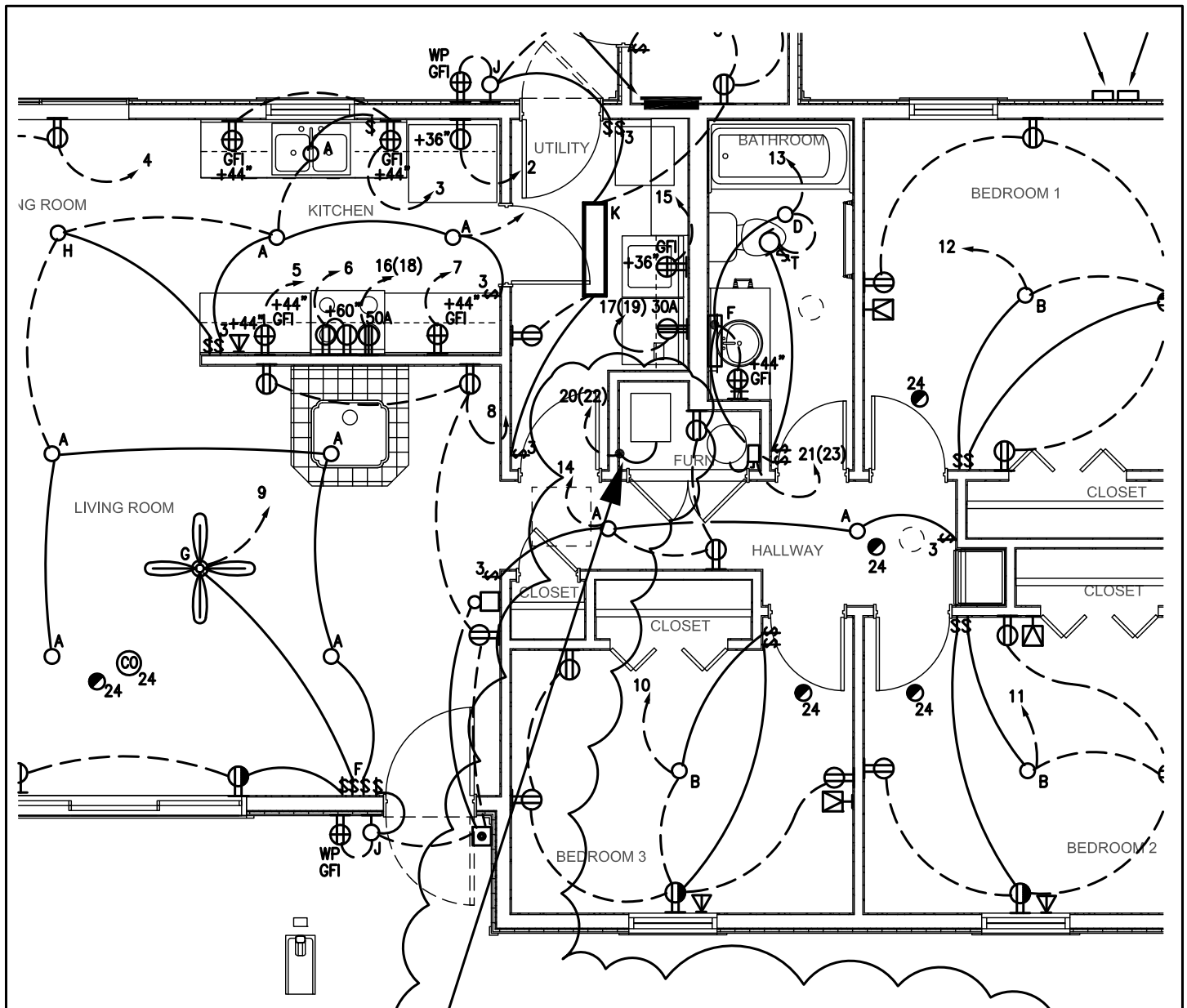
II. **Supplemental Instructions:**

1. ELECTRICAL SKETCHES PROVIDED IN ADDENDUM NUMBER ONE (1) ARE HEREBY VOIDED. Disregard Sketches E01, E02, E03, and E04.
2. Electrical scope shall be modified as shown in the attached new electrical sketches, Attachment E05 through E12.

All other provisions of this Invitation for Bid shall remain unchanged. Please ensure you acknowledge this Addendum on the Form of Bid, failure to do so is subject to bidder disqualification by the NHA.

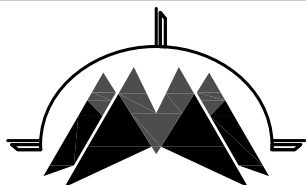


Lorencita Salabye, Procurement Specialist
NHA Procurement Department



NOTE: DELETE ALL FURNACE DISCONNECTS. FURNACE IS FURNISHED WITH INTEGRAL DISCONNECTS PER MECHANICAL.

C5 ELECTRICAL PLAN - 3 BEDROOM
 1/4" = 1'-0"



LOADCENTER

120/240V, 1 PHASE, 4W, 200A M.L.O., LOADCENTER, 24 CIRCUITS, FLUSH MOUNTED, NEMA 1, 10kAIC RATED.

<u>CIRCUIT</u>	<u>BREAKER</u>	<u>WIRE</u>	<u>LOAD</u>
1 THRU 15	20A-1P*	#12	RECEPTACLES, LIGHTS EQUIPMENT
24	20A-1P	#12	SMOKE DETECTORS
20(22)	60A-2P	#6	FURNACE
16(18)	50A-2P	#8	RANGE
17(19)	30A-2P	#10	DRYER
21(23)	30A-2P	#10	WATER HEATER

*COMPLY WITH ARC FAULT REQUIREMENTS OF THE 2014 NEC ARTICLE 210.12.

**PER NEC 220.83 OPTIONAL CALCULATION - DWELLING UNIT
LOAD SUMMARY CALCULATIONS-120/240V, 1PH, 3W**

GENERAL LIGHTING AND POWER	
1215 SF @ 3 WATTS/SF	3,645
APPLIANCE OUTLETS (2)	3,000
RANGE	8,000
REFRIGERATOR	1,500
WASHER	1,500
DRYER	5,000
WATER HEATER	5,500
	<u>28,145</u>

1ST 10KVA @ 100%	10,000
REMAINDER @ 40% (18,145 X .4)	7,258
ELECTRIC FURNACE	13,200
	<u>30,458</u>

CALC LOAD FOR SERVICE: 30,458 WATTS
 $30,458 \div 240V = 127.0$ AMPS MIN.



ELECTRICAL PLANS, LEGEND,
SCHEDULES, DETAILS, ONE-LINE - E101
3-BEDROOM
AZ 12-301 MODERNIZATION
CHILCHINBETO, AZ

Project No: 2015.04

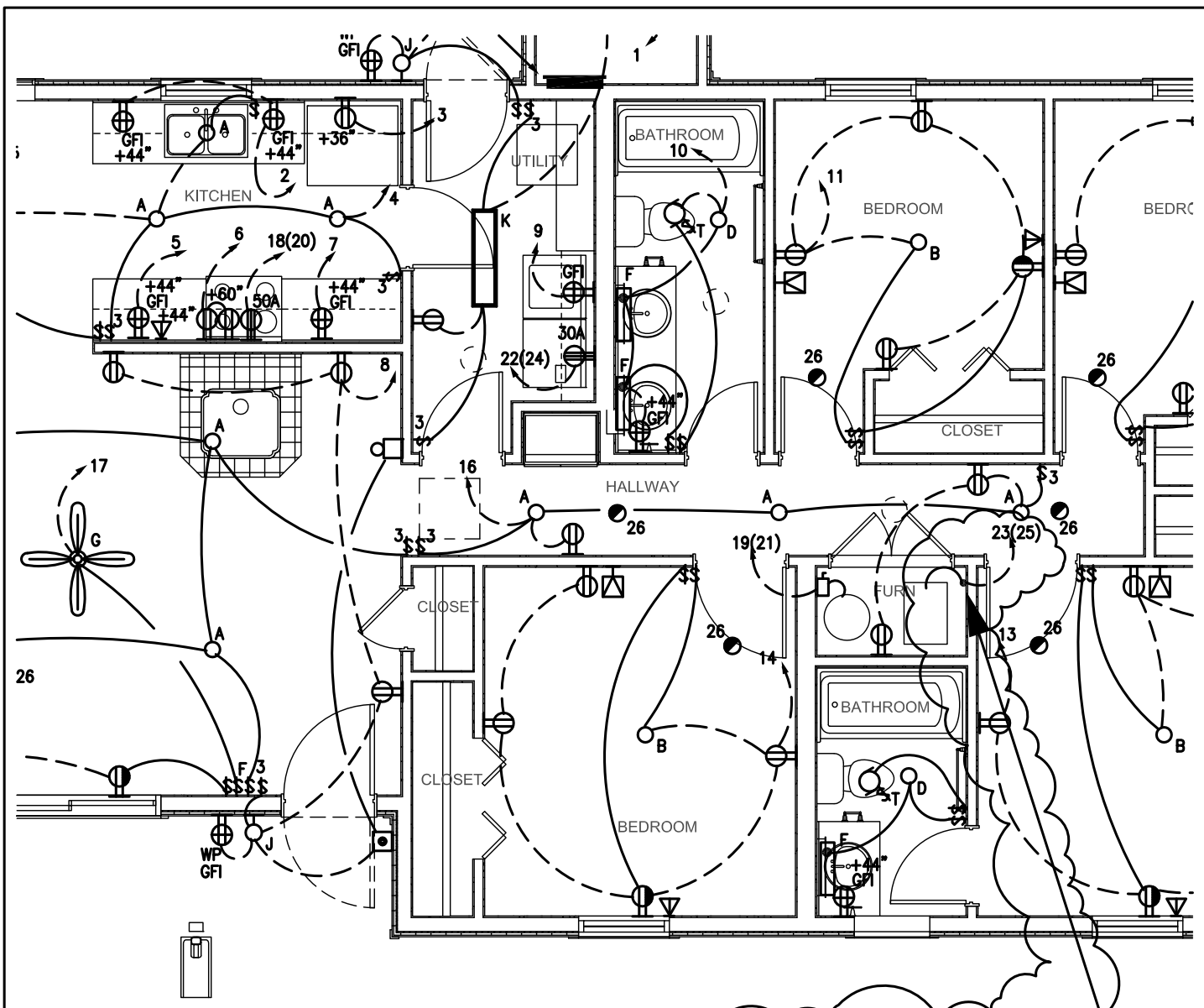
Drawn By: AEDi

Scale: N.T.S.

Date: 11/26/18

ADDENDUM
S K - E N o .

06



NOTE: DELETE ALL FURNACE DISCONNECTS. FURNACE IS FURNISHED WITH INTEGRAL DISCONNECTS PER MECHANICAL.

C5 ELECTRICAL PLAN - 4 BEDROOM
 1/4" = 1'-0"



ELECTRICAL PLANS, LEGEND,
 SCHEDULES, DETAILS, ONE-LINE - E102
 4-BEDROOM
 AZ 12-301 MODERNIZATION
 CHILCHINBETO, AZ

Project No: 2015.04
 Drawn By: AEDI
 Scale: N.T.S.
 Date: 11/26/18

ADDENDUM
 SK - E No.
07

LOADCENTER

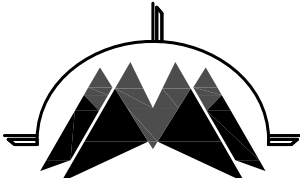
120/240V, 1 PHASE, 4W, 200A M.L.O., LOADCENTER, 30 CIRCUITS, FLUSH MOUNTED, NEMA 1, 10kAIC RATED.

<u>CIRCUIT</u>	<u>BREAKER</u>	<u>WIRE</u>	<u>LOAD</u>
1 THRU 17	20A-1P*	#12	RECEPTACLES, LIGHTS EQUIPMENT
26	20A-1P	#12	SMOKE DETECTORS
19(21)	80A-2P	#4	FURNACE
18(20)	50A-2P	#8	RANGE
22(24)	30A-2P	#10	DRYER
23(25)	30A-2P	#10	WATER HEATER
27 THRU 30	1P	---	SPACES

*COMPLY WITH ARC FAULT REQUIREMENTS OF THE 2014 NEC ARTICLE 210.12.

**PER NEC 220.83 OPTIONAL CALCULATION - DWELLING UNIT
LOAD SUMMARY CALCULATIONS-120/240V, 1PH, 3W**

GENERAL LIGHTING AND POWER	
1452 SF @ 3 WATTS/SF	4,356
APPLIANCE OUTLETS (2)	3,000
RANGE	8,000
REFRIGERATOR	1,500
WASHER	1,500
DRYER	5,000
WATER HEATER	5,500
	<u>28,856</u>
1ST 10KVA @ 100%	10,000
REMAINDER @ 40% (18,856 X .4)	7,542
ELECTRIC FURNACE	18,480
	<u>36,022</u>
CALC LOAD FOR SERVICE:	36,022 WATTS
$36,022 \div 240V = 150.1$ AMPS MIN.	



ELECTRICAL PLANS, LEGEND,
SCHEDULES, DETAILS, ONE-LINE - E102
4-BEDROOM
AZ 12-301 MODERNIZATION
CHILCHINBETO, AZ

Project No: 2015.04

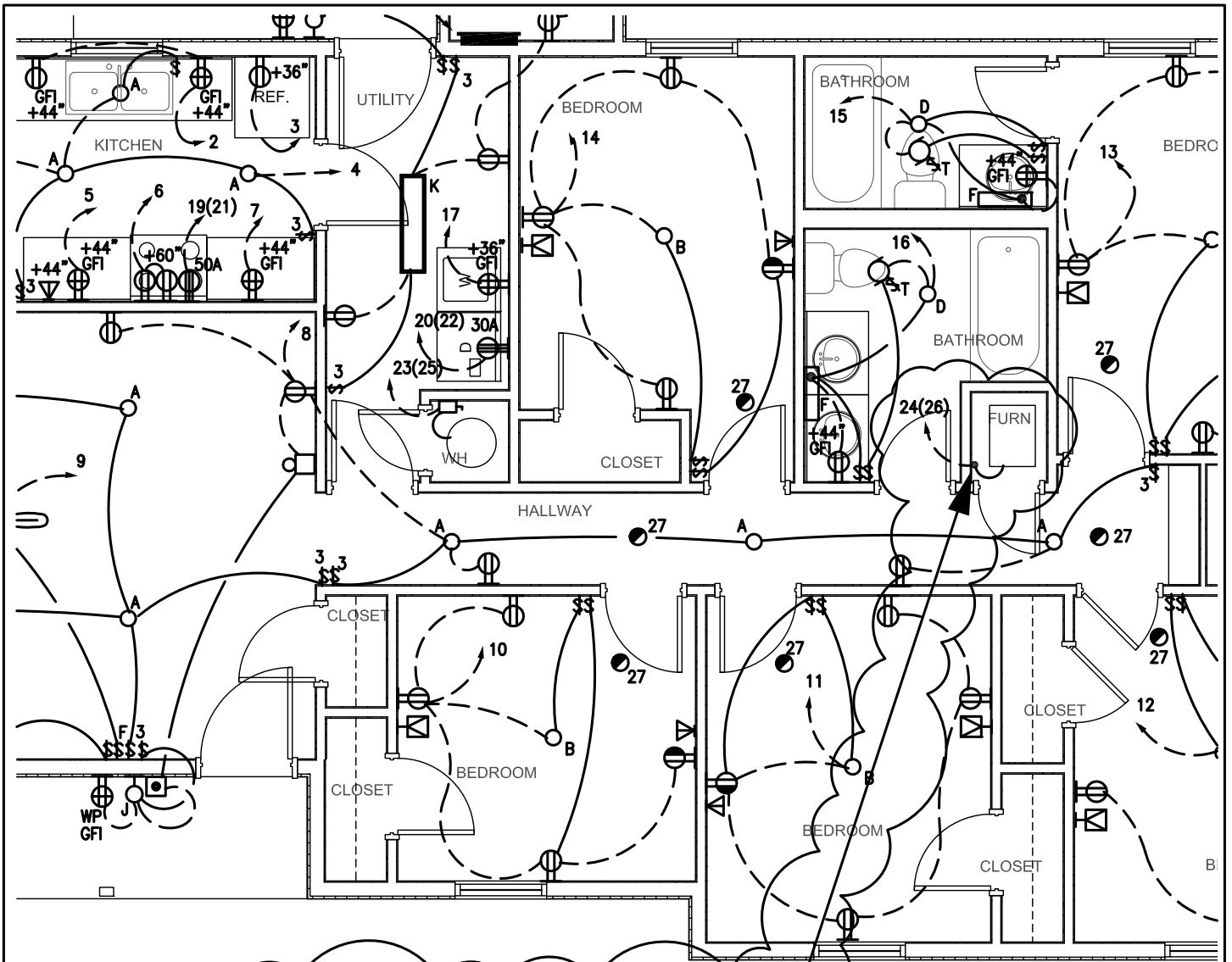
Drawn By: AEDI

Scale: N.T.S.

Date: 11/26/18

ADDENDUM
SK - E No.

08



NOTE: DELETE ALL FURNACE DISCONNECTS. FURNACE IS FURNISHED WITH INTEGRAL DISCONNECTS PER MECHANICAL.

C5 ELECTRICAL PLAN - 5 BEDROOM
1/4" = 1'-0"

TYPICAL 5 BEDROOM VISUAL/HEARING IMPAIRED UNIT 10 ONLY TO HAVE 'VH' SMOKE DETECTORS AND 'VH' DOOR BELL AND CHIME UNITS.



LOADCENTER			
120/240V, 1 PHASE, 4W, 200A M.L.O., LOADCENTER, 30 CIRCUITS, FLUSH MOUNTED, NEMA 1, 10kAIC RATED.			
CIRCUIT	BREAKER	WIRE	LOAD
1 THRU 18	20A-1P*	#12	RECEPTACLES, LIGHTS EQUIPMENT
27	20A-1P	#12	SMOKE DETECTORS
24(26)	80A-2P	#4	FURNACE
19(21)	50A-2P	#8	RANGE
20(22)	30A-2P	#10	DRYER
23(25)	30A-2P	#10	WATER HEATER
28 THRU 30	1P	---	SPACES

*COMPLY WITH ARC FAULT REQUIREMENTS OF THE 2014 NEC ARTICLE 210.12.

**PER NEC 220.83 OPTIONAL CALCULATION - DWELLING UNIT
LOAD SUMMARY CALCULATIONS-120/240V, 1PH, 3W**

GENERAL LIGHTING AND POWER 1605 SF @ 3 WATTS/SF	4,815
APPLIANCE OUTLETS (2)	3,000
RANGE	8,000
REFRIGERATOR	1,500
WASHER	1,500
DRYER	5,000
WATER HEATER	5,500
	<u>29,315</u>

1ST 10KVA @ 100%	10,000
REMAINDER @ 40% (19,315 X .4)	7,726
ELECTRIC FURNACE	18,480
	<u>36,206</u>

CALC LOAD FOR SERVICE: 36,206 WATTS
 $36,206 \div 240V = 151.0$ AMPS MIN.



ELECTRICAL PLANS, LEGEND,
 SCHEDULES, DETAILS, ONE-LINE - E103
 5-BEDROOM
 AZ 12-301 MODERNIZATION
 CHILCHINBETO, AZ

Project No: 2015.04

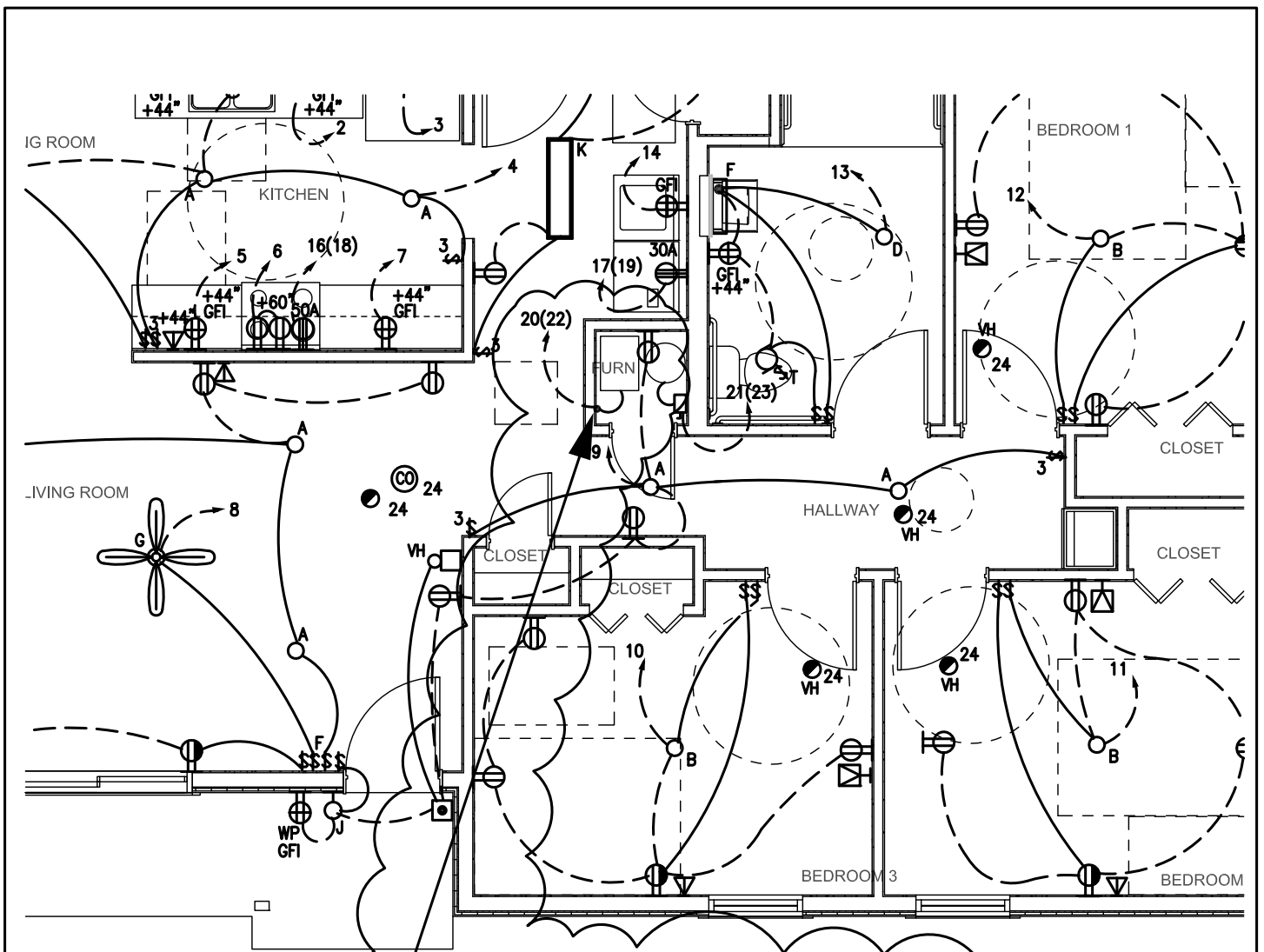
Drawn By: AEDi

Scale: N.T.S.

Date: 11/26/18

ADDENDUM
 SK - E No.

10



NOTE: DELETE ALL FURNACE DISCONNECTS. FURNACE IS FURNISHED WITH INTEGRAL DISCONNECTS PER MECHANICAL.

C5 ELECTRICAL PLAN - 3 BEDROOM ADA
 1/4" = 1'-0"

TYPICAL 3 BEDROOM VISUAL/HEARING IMPAIRED UNIT 10 ONLY TO HAVE 'VH' SMOKE DETECTORS AND 'VH' DOOR BELL AND CHIME UNITS.



ELECTRICAL PLANS, LEGEND,
 SCHEDULES, DETAILS, ONE-LINE - E101
 3 ADA-BEDROOM
 AZ 12-301 MODERNIZATION
 CHILCHINBETO, AZ

Project No: 2015.04
 Drawn By: AEDI
 Scale: N.T.S.
 Date: 11/26/18

ADDENDUM
 SK - E No.

11

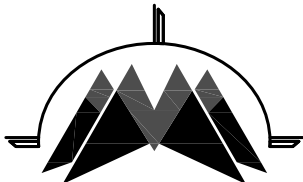
LOADCENTER			
120/240V, 1 PHASE, 4W, 200A M.L.O., LOADCENTER, 24 CIRCUITS, FLUSH MOUNTED, NEMA 1, 10kAIC RATED.			
<u>CIRCUIT</u>	<u>BREAKER</u>	<u>WIRE</u>	<u>LOAD</u>
1 THRU 15	20A-1P*	#12	RECEPTACLES, LIGHTS EQUIPMENT
24	20A-1P	#12	SMOKE DETECTORS
20(22)	60A-2P	#6	FURNACE
16(18)	50A-2P	#8	RANGE
17(19)	30A-2P	#10	DRYER
21(23)	30A-2P	#10	WATER HEATER
*COMPLY WITH ARC FAULT REQUIREMENTS OF THE 2014 NEC ARTICLE 210.12.			

**PER NEC 220.83 OPTIONAL CALCULATION - DWELLING UNIT
LOAD SUMMARY CALCULATIONS-120/240V, 1PH, 3W**

GENERAL LIGHTING AND POWER	
1280 SF @ 3 WATTS/SF	3,840
APPLIANCE OUTLETS (2)	3,000
RANGE	8,000
REFRIGERATOR	1,500
WASHER	1,500
DRYER	5,000
WATER HEATER	5,500
	<u>28,340</u>

1ST 10KVA @ 100%	10,000
REMAINDER @ 40% (18,340 X .4)	7,336
ELECTRIC FURNACE	13,200
	<u>30,536</u>

CALC LOAD FOR SERVICE: 30,536 WATTS
 $30,536 \div 240V = 127.2$ AMPS MIN.



ELECTRICAL PLANS, LEGEND,
 SCHEDULES, DETAILS, ONE-LINE - E101
 3 ADA-BEDROOM
 AZ 12-301 MODERNIZATION
 CHILCHINBETO, AZ

Project No: 2015.04
 Drawn By: AEDi
 Scale: N.T.S.
 Date: 11/26/18

ADDENDUM
 S K - E N o .

12